

Having trouble viewing this email? [Click here](#)



www.icebac.org

[printable copy](#)

[subscribe](#)

3rd Quarter 2011

IN THIS ISSUE:

- New Mast Climber Website Launched by Masonry r2p Partnership
- 3% Withholding Repeal
- DOL & IRS Sign Memorandum of Understanding to Combat Misclassification
- OSHA Extends Comment Period on Injury Reporting Requirements
- ICE Affiliate Focus: Eastern Contractors Association
- IMI Contractor Services Focus
- New Product Section: Product Update: Spray Polyurethane Foam (SPF)
- Construction Labor Research Council Reports
- Calendar

New Mast Climber Website Launched by Masonry r2p Partnership



In an effort to encourage contractors to consider mast climbers when selecting scaffold for their projects, and to promote the safe use of this type of scaffold with both workers and contractors, the Masonry r2p Partnership has launched a new website "Research to Practice: Mast Climbers" (<http://www.cpwr.com/mastclimbers.html>.) This easy to use site is intended to serve as a one-stop mast climber resource for contractors and members. Read [more](#).

3% Withholding Repeal

The US House is expected to act on legislation to repeal the mandatory 3% mandatory withholding tax on public work that is scheduled to go into effect next year. While the schedule of our government is always subject to change, the time to make our voices heard is now. To show your support for this repeal, write a letter on your letterhead to Chairman Dave Camp, Committee on Ways and Means, 1102 Longworth House Office Building, Washington, DC 20515 telling him that you support H.R. 674 to repeal the 3% withholding tax (It is also recommend that you 'cc' Rep. Sander Levin, Rep. Wally Herger and Rep. Earl Blumenauer.) The letter can be brief and should clearly state your support for H.R.674 and why repealing the 3% withholding tax is important to your members or your company. Send your letter to ICE Director of Advocacy, Laina Aquiline, at laquiline@icebac.org and it will be compiled with other letters to be delivered to Chairman Camp.

Labor secretary, IRS commissioner sign memorandum of understanding to improve agencies' coordination on employee misclassification compliance and education.

Secretary of Labor Hilda L. Solis hosted a ceremony at U.S. Department of Labor headquarters in Washington to sign a memorandum of understanding with the Internal Revenue Service that will improve departmental efforts to end the business practice of



misclassifying employees in order to avoid providing employment protections. In addition, labor commissioners and other agency leaders representing seven states signed memorandums of understanding with the department's Wage and Hour Division and, in some cases, its Employee Benefits Security Administration, Occupational Safety and Health Administration, Office of Federal Contract Compliance Programs and Office of the Solicitor.



The memorandums of understanding will enable the U.S. Department of Labor to share information and coordinate law enforcement with the IRS and participating states in order to level the playing field for law-abiding employers and ensure that employees receive the protections to which they are entitled under federal and state law. Read full article at NoMisclassification.org.

OSHA Extends Comment Period on Injury Reporting Requirements

OSHA announced late last month that due to requests from stakeholders, it is extending the comment period on revising the recordkeeping and reporting requirements for work-related injuries and illnesses.

Individuals interested in submitting comments must now do so by Oct. 28, 2011.

"Under the revised proposal, employers would be required to report to OSHA any work-related fatalities and all in-patient hospitalizations within eight hours, and work-related amputations within 24 hours," OSHA said. "OSHA's current regulation requires employers to report to OSHA, within eight hours, all work-related fatalities and in-patient hospitalizations of three or more employees. OSHA is also proposing to update Appendix A of the recordkeeping rule that lists industries partially exempt from the requirements to maintain work-related injury or illness logs. These industries received partial exemption because of their relatively low injury and illness rates."

For more information, [view the Federal Register notice](#).

Back to [top](#).

AFFILIATE FOCUS

EASTERN CONTRACTORS ASSOCIATION

ECA traces its history to 1890 and the builders' exchanges in Albany, Schenectady and Troy and is now the only regional "full-service" contractor association in the Eastern New York region serving the needs of all segments of the construction industry. Read [more](#).

IMI CONTRACTOR SERVICES

IMI administers a project for Wisconsin on behalf of the Bricklayers Wisconsin Administrative District Council, the Mason Contractors Association of Milwaukee (MCAM) and the Wisconsin Masonry Alliance (WMA) to contract with Sam Rubenzer, MBA, PE, SE of ForSE Consulting to promote structural masonry

solutions in Wisconsin through outreach, education and specific project involvement, thus forming the Wisconsin Structural Masonry Initiative. Read [more](#).



Sam Rubenzer, MBA, PE, SE of ForSE Consulting

NEW PRODUCT SECTION

Product Update - Spray Polyurethane Foam (SPF) for Masonry Walls

What are they?

Spray foams were first invented in Germany in the 1930's, followed by spray polyurethane foams (SPF) in the 1950's. They were first used in construction applications in Canada, shortly followed by U.S. use in roofing in the 1960's.

The 1970's brought a 2 pound per cubic foot closed cell application for exterior and interior use as perimeter wall insulation, and finally in the 1990's a lighter, 0.5 pound per cubic foot open cell foam entered the interior wall market.

SPF is spray applied as a liquid, and expands several times its original size as it hardens.

Use of Spray Foam Insulation

ICE member contractors are mostly interested in cavity wall applications. These must be closed cell materials, and perform many functions.

Insulation - SPF offers many advantages, including high R values, often in excess of 6.5 per inch of thickness. Additionally, it is a seamless application that forms to the backup system.

Air Barrier - Testing in accordance with ASTM E283, "Standard Test Method for Determining the Rate of Air Leakage Through Exterior Windows, Curtain Walls, and Doors Under Specified Pressure Differences Across the Specimen" indicated that a one inch thickness of SPF over Concrete Masonry Units (CMU) shows literally no air leakage at either 1.57 psf or 6.24 psf. Over gypsum board this increases slightly.

Opportunity for BAC Signatory Contractors



Maple Heights High School. Work Performed by Giambrone Masonry and members of Local 5 Ohio Administrative District Council. Product: NCFI Insul

ICE member contractors already involved with SPF installation mention that SPF may be higher in cost than typical rigid board insulation, but when SPF also functions as an air barrier the cost equation can be different.

There is also an up-front cost for the sprayer, gun, compressor, trailer and other accessories.

Simply subcontracting the work is an option, but contractors caution to pay careful attention to the number of mobilizations priced in the bid package as an incorrect calculation can lead to an additional expense. Contractors who bid and get this work have the benefit of schedule/coordination control.

Manufacturers:

Bayer Material Science LLC www.bayermaterialscience.com

BASF Polyurethane Foam Enterprises LLC www.basf.com

BioBased Insulation, LLC www.biobasedtechnologies.com

CertainTeed Corporation www.certainteed.com

Demilec USA LLC www.demilecusa.com

Dow Chemical Group www.dow.com

Lapolla Industries, Inc. www.lapolla.com

NCFI www.ncfi.com

Associations:

Spray Polyurethane Foam Alliance www.sprayfoam.org

Foam Insulation Association www.foaminsulation.org

Back to [top](#).

CONSTRUCTION LABOR RESEARCH COUNCIL REPORTS

ICE Affiliates can view the following Construction Labor Research Council reports in the Members Only section of the ICE website:

5-Year Averages

- 7/01/06 - 7/01/11 5-Year City Average Increases in Dollars - 1 & 2
- 7/01/06 - 7/01/11 5-Year City Average Increases in Percent - 1 & 2
- 7/01/06 - 7/01/11 5-Year Region Average Increases in Dollars - 1 & 2
- 7/01/06 - 7/01/11 5-Year Region Average Increases in Percent - 1 & 2

2011

- February - Construction Labor Rate Trends & Outlook
- March - Cost of Terms and Conditions in Collective Bargaining Agreements
- July - Union/Non-Union Trends Paper
- September - 2011 Wage and Benefit Settlements

2010

- November - Terms and Conditions Reference Guide
- July - Construction Employment Trends

2009

- Labor Supply Concepts Paper-- July - Union/Non-Union Paper

Back to [top](#).

CALENDAR

- | | | |
|----------------|--|--|
| Oct. 5 | Lunch and Learn: Moisture Control for Masonry at Magellan Development - Chicago, IL | Contact Scott Conwell
sconwell@imiweb.org |
| Oct. 5 | Lunch and Learn: Sustainable Design of Energy-Efficient Masonry Building Envelope at L.F. Driscoll Engineering Department - Philadelphia, PA
Co-sponsored by the DVMI and PCMA | Contact Joe Fattore
jfattore@imiweb.org |
| Oct. 5 | Craftworker Upgrade Training: Flashing at BAC Local 1 MN/ND - St. Paul, MN
Download Flyer | Contact Mark Wickstrom
mwickstrom@imiweb.org |
| Oct. 5 | Morris County Building Officials meeting: New Product and Technologies - Denville, NJ | Contact Stephanie Staub
sstaub@imiweb.org |
| Oct. 6 | Lunch and Learn: Designing with Tile at Nelson Architects - New York, NY | Contact John Bachenski
jbachenski@imiweb.org |
| Oct. 6 | Lunch and Learn: Moisture Control for Masonry at Holabird & Root Architects - Chicago, IL | Contact Scott Conwell
sconwell@imiweb.org |
| Oct. 6 | Lunch and Learn: Designing and Building Quality Masonry Structures at The Architectural Team - Chelsea, MA | Contact Steve Bolognese
sbolognese@imiweb.org |
| Oct. 6 | Lessons Learned in the Masonry Field - St. Paul, MN
Download Flyer | Contact Mark Wickstrom
mwickstrom@imiweb.org |
| Oct. 10 | Lunch and Learn: Thermal Mass and Ceramic Tile - Arlington Heights, IL | Contact Scott Conwell
sconwell@imiweb.org |
| Oct. 10 | Dinner Presentation: Sustainable Retrofits with Tile, Marble & Terrazzo - Arlington Heights, IL
Download Flyer | Contact Scott Conwell
sconwell@imiweb.org |
| Oct. 11 | South Bend Masonry Day at The University of Notre Dame - South Bend, IN | Contact Dave Collins
dcollins@imiweb.org |
| Oct. 12 | Lunch and Learn: Quality Control for Masonry at Magellan Development - Chicago, IL | Contact Scott Conwell
sconwell@imiweb.org |
| Oct. 12 | Lunch and Learn: Flashing & Moisture Control at HUD-NYC - New York, NY | Contact John Bachenski
jbachenski@imiweb.org |

- Oct. 12** Evening Presentation: On the Site with Architects and Masons - Contact John Bachenski
New York, NY Panel Discussion at AIA NYC Building Enclosure Council 5-8 PM jbachenski@imiweb.org
- Oct. 13** Lunch and Learn: Quality Control for Masonry at Legat Architects - Chicago, IL Contact Scott Conwell
sconwell@imiweb.org
- Oct. 14** Masonry Codes Update seminar at Harrison Hamnett - Pennington, NJ Contact Stephanie Staub
sstaub@imiweb.org
- Oct. 18** Masonry in the Morning Series - Long Island City, NY Contact John Bachenski
Sponsored by Kingston Block, BAC Local 1 NY and IMI jbachenski@imiweb.org
[Download Flyer](#)
- Oct. 18** Craftwork Certification: Flashing Upgrade and Grouting & Reinforcement Certification at BAC Local 4 IN/KY - Albany, IN Contact Jennifer Banks
[Download Flyer](#) jbanks@bacweb.org
- Oct. 19** Masonry Workshop for Builders Inspection Program - Fairfield, NJ Contact Stephanie Staub
- Fairfield Training Center sstaub@imiweb.org
- Oct. 19** Masonry Workshop for the NYC Housing Preservation and Development Inspectors - Long Island City, NY Contact John Bachenski
jbachenski@imiweb.org
- Oct. 20** 9th Annual Masonry Restoration Workshop - Chicago, IL Contact Scott Conwell
[Download Flyer](#) sconwell@imiweb.org
- Oct. 25** Lunch and Learn: Cold Weather Masonry Construction at Central Illinois AIA / Capital Development Board - Springfield, IL Contact Scott Conwell
sconwell@imiweb.org
- Oct. 26** LaCrosse Masonry Seminar Series: Designing & Detailing Durable Masonry Walls - LaCrosse, WI Contact Pat Conway
pconway@imiweb.org
- Oct. 26** Lunch and Learn: Masonry Restoration at Gruzen Samton - New York, NY Contact John Bachenski
jbachenski@imiweb.org
- Oct. 26** Flynn Center Masonry Seminar Series: Tips for Optimizing Structural Masonry and Lessons Learned in the Masonry Field - Bowie, MD Contact Dawn Lafey
[Download Flyer](#) dlafey@imiweb.org
- Oct. 26** Lunch and Learn: Masonry Movement Joints at Kimmel Bogrette Architects - Conshohocken, PA Contact Joe Fattore
jfattore@imiweb.org
- Oct. 27** Lunch and Learn: Masonry for Sustainability at DeStefano + Partners - Chicago, IL Contact Scott Conwell
sconwell@imiweb.org

- Oct. 28** Lesson Learned in the Masonry Field at NJAPPA Fall membership meeting - Branchburg, NJ - *Raritan Valley Community College* Contact Stephanie Staub
sstaub@imiweb.org
- Nov. 1** Lunch and Learn: Moisture Control for Masonry at FGM Architects - Oak Park, IL Contact Scott Conwell
sconwell@imiweb.org
- Nov. 2** Masonry Contractors Association of Central PA Cram Sessions - York, PA Contact Maria Viteri
mviteri@imiweb.org
[Download Flyer](#)
- Nov. 2** Lunch and Learn: High Performing Masonry Wall Systems at Celli-Flynn and Brennan - Pittsburgh, PA Contact Tom Nagy
tnagy@imiweb.org
- Nov. 3** RAM Elements Loadbearing Masonry 3D Software Webinar - Sponsored by IMI, NCMA and Bentley Systems Contact Elena Johnson
ejohnson@imiweb.org
[Registration Form](#)
- Nov. 9** Lunch and Learn: Introduction to AAC at Magellan Development - Chicago, IL Contact Scott Conwell
sconwell@imiweb.org
- Nov. 10** Lunch and Learn: Quality Control for Masonry at Holabird & Root Architects - Chicago, IL Contact Scott Conwell
sconwell@imiweb.org
- Nov. 10** Lunch and Learn: Tips to Optimize Structural Masonry at Edelman Sultan Knox Wood Architects LLP - New York, NY Contact John Bachenski
jbachenski@imiweb.org
- Nov. 11** Lunch and Learn: High Performing Masonry Envelope at Spillman Farmer Architects - Bethlehem, PA Contact Maria Viteri
mviteri@imiweb.org
- Nov. 12** Craftworker Upgrade Training: Blueprint Reading - Allentown, PA Contact Maria Viteri
mviteri@imiweb.org
- Nov. 16** Masonry Seminar Series - Boosting Energy Performance in Masonry Walls - Addison, IL - *IMI 2011 Architectural Seminar Series 5 of 5* Contact
Scott Conwell
sconwell@imiweb.org
[Download Flyer](#)
- Nov. 16** Lunch and Learn: Movement Control for Masonry at HUD-NYC - New York, NY Contact John Bachenski
jbachenski@imiweb.org
- Nov. 21** Life Cycle Cost Analysis at CSI Chapter Meeting - Syracuse, NY Contact Keith Lashway
klashway@imiweb.org
- Nov. 30** Lunch and Learn: : Masonry for Sustainability at O'Shea University/O'Shea Builders - Springfield, IL Contact Scott Conwell
sconwell@imiweb.org
- Nov. 30** Craftworker Upgrade Training: Blueprint Reading - Bordentown, NJ Contact Stephanie Staub
sstaub@imiweb.org

- Dec. 8** Lunch and Learn: Air Barriers at BBS Architects and Engineer, P.C. - Patchogue, NY Contact John Bachenski
jbachenski@imiweb.org
- Dec. 14** Lunch and Learn: Flashing and Moisture Control at Kimmel Bogrette Architects - Conshohocken, PA Contact Joe Fattore
jfattore@imiweb.org
- Dec. 14** Lunch and Learn: Designing with Tile at SHCA Architects - New York, NY Contact John Bachenski
jbachenski@imiweb.org
- Dec. 15** Lunch and Learn: Designing with Tile at H3HC Architects - New York, NY Contact John Bachenski
jbachenski@imiweb.org
- May 1-3, 2012** Quality Construction Alliance Legislative Conference Contact Laina Aquiline
laquiline@icebac.org

Back to [top](#).

ICE VOICE CONTINUED

New Mast Climber Website Launched by Masonry r2p Partnership

Given the physically demanding nature of masonry work it may not come as a surprise that masonry craftworkers and their employers are concerned about back injuries. What may be surprising is that the masonry industry has consistently had one of the highest rates for back injuries and illnesses out of all construction industries, so finding solutions that can help prevent these injuries and at the same time improve productivity is a benefit for ICE members and their employees.

The use of mast climbers, also called mast climbing work platforms or mast scaffolding, is one such solution identified by the International Council of Employers of Bricklayers and Allied Craftworkers (ICE), Bricklayers and Allied Craftworkers (BAC) and the International Masonry Institute (IMI), through their work as the Masonry Research to Practice [r2p] Partnership.

This type of scaffold, in addition to being quicker to erect and dismantle, can be adjusted to position workers at the optimum location for performing work. Working at an optimum height between knee and shoulder has

been found to reduce workers' back and shoulder injuries and allow them to perform tasks quickly and precisely. When assembled and used in accordance with manufacturers' specifications, this type of scaffold can offer significant gains in productivity and convenience. As documented in the recent CPWR report "Reaching Higher: Recommendations for the Safe Use of Mast Climbing Work Platforms," using the equipment safely is key to realizing these gains.

In an effort to encourage contractors to consider mast climbers when selecting scaffold for their projects, and

CPWR
THE CENTER FOR CONSTRUCTION
RESEARCH AND TRAINING
a world leader in improving the safety and health of construction workers

Research Training Service About CPWR What's New Resources & Publications

RESEARCH TO PRACTICE : MAST CLIMBERS

BENEFITS...

- Improved Worker Safety
 - Reduces risk of back & shoulder injuries
- Increased Productivity
 - Quicker to erect and dismantle
 - Enables workers to perform tasks at optimal heights and work more efficiently

Learn More...
Access to research, reports and related recommendations on the use of mast climbers

Mast climbing scaffolding (mast climbers) are power-driven work platforms that climb a vertical mast or tower to reach higher and carry greater loads than traditional scaffolds. When installed and used correctly, they enhance safety and productivity.

to promote the safe use of this type of scaffold with both workers and contractors, the Partnership has launched a new website "Research to Practice: Mast Climbers" (<http://www.cpwr.com/mastclimbers.html>) This easy to use site is intended to serve as a one-stop mast climber resource for contractors and members.

Broken down into five topic areas, the site includes access to information on productivity benefits and research, safety and training programs, purchasing and rental resources, rules and regulations, and related news articles. This site, which will be updated as new information becomes available, is just one example of the Partnership developing materials to raise awareness and use of equipment, tools and work practices that can make jobs safer and improve a contractor's bottom line.

Back to [top](#).

IMI CONTRACTOR SERVICES

As Vice President of Allied Construction Employers Association (ACEA) and Co-Chair of the International Masonry Institute (IMI), Fred Kinateder is in a unique position as an advocate of both organizations to find a way to collaborate to further the Union Masonry Industry.

One such collaboration started last year when IMI agreed to administer a project for Wisconsin on behalf of the Bricklayers Wisconsin Administrative District Council, the Mason Contractors Association of Milwaukee (MCAM) and the Wisconsin Masonry Alliance (WMA) to contract with Sam Rubenzer, MBA, PE, SE of ForSE Consulting to promote structural masonry solutions in Wisconsin through outreach, education and specific project involvement, thus forming the Wisconsin Structural Masonry Initiative.

Mr. Rubenzer previously worked for Bentley Systems, managing the structural training team and training structural engineers all over the world on how to use STAAD.pro and each of the RAM structural engineering software programs. As a practicing engineer, he has extensive experience working with economical masonry designs for such clients as Target Stores.

The project is overseen by IMI's Director of Market Development and Technical Services for the Wisconsin Area Office, Pat Conway, AIA. Last year Sam met with key structural engineers as identified by the Initiative, helping to dispel negative myths about masonry and masons. Working with structural engineers and construction managers in the design phase, Sam has helped develop CMU options for tall walls, fire walls, shaft walls, interior partitions as well as foundation walls.



Sam Rubenzer presents at IMI's Structural Masonry Short Course

His meetings with key structural engineering Schools including Milwaukee School of Engineering, UW - Milwaukee College of Engineering, Marquette University as well as UW - Madison College of Engineering have led to guest speaker masonry classes which will plant Structural Masonry Solution seeds in the minds of future engineers.

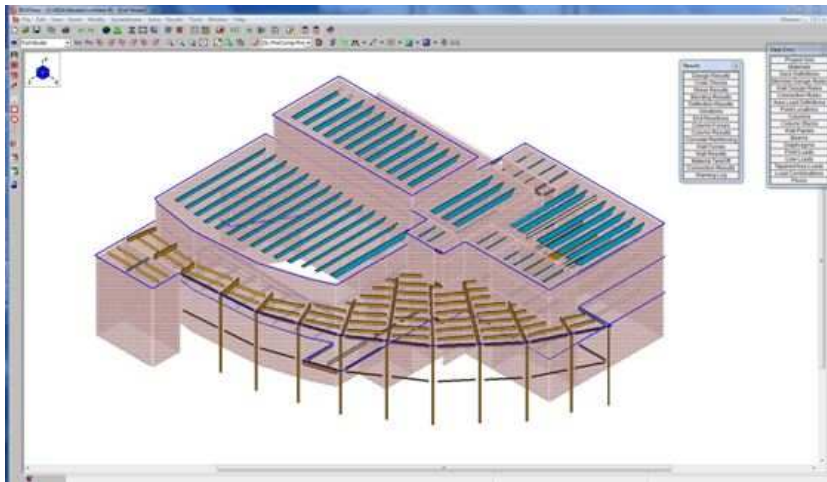
With Sam's help the first annual Structural Masonry Short Course was developed and delivered in Milwaukee, Madison and Appleton.

Future seminars, such as "Structural Masonry Design for Architects: What your structural engineer might not be telling you or doesn't know," are planned to reach out to both engineers and architects to tell them the virtues of structural masonry design.

In July, Sam worked with the City of Madison Engineer to develop the project scope for the Garner Park Shelter Renovation and provided bid documents to local mason contractors. He also worked with Larson Engineering to ensure economical masonry design could beat the price of steel frame and metal stud infill on Manitowoc Elementary School. Recently, following a meeting with IMI and the Architect for the Cornell Water Treatment Facility, Sam is assisting the Engineer in using 8" CMU rather than 12" CMU. This led to involvement in a 15,000 SF Community Theatre for La Crosse where Sam is helping the engineer build computer models for loadbearing masonry solution.

IMI is working to ensure that all constituents are educated on the benefits of Structural masonry, a proven system that saves time and money, without sacrificing good looks. With seminars such as Tips for Optimizing Structural Masonry, Architects, Engineers, General Contractors, Construction Managers, Owners, Developers and BAC Signatory Contractors gain a better understanding of effective use and selection of materials.

IMI also educates the craftworker through their Flashing and Grouting Certification to ensure when a job does go with a Structural Solution BAC signatory contractors have the skilled manpower to produce a quality project.



RISA 3D model for the La Crosse Theatre

For more information on how IMI can help you please contact your local IMI representative at 800-IMI-0988.

Back to [top](#).

AFFILIATE FOCUS EASTERN CONTRACTORS ASSOCIATION

Eastern Contractors Association, Inc. (ECA) is a trade association of general contractors, subcontractors, suppliers and service firms engaged in commercial, industrial and institutional construction throughout Eastern New York. ECA traces its history to 1890 and the builders' exchanges in Albany, Schenectady and Troy and is now the only regional "full-service" contractor association in the Eastern New York region serving the needs of all segments of the construction industry. Its committees include: Affirmative Action, Education, Ethics, Industry Relations, Labor Relations, Membership, Negotiating and Programs.



The Association negotiates and administers industry labor agreements with the Bricklayers and Allied Craftworkers, Carpenters, Glaziers, Laborers, Operating Engineers, Painters and Teamsters. Association representatives also act as Trustees on several of the fringe benefit funds of those trades, and demonstrate their dedication to providing the best stewardship possible through their involvement in the International Foundation of Employee Benefit Plans (see "[A Tradition of Stewardship](#)" below).

ECA's Safety Program is one of the most complete in New York State and includes the development of individual company safety programs and representation of members in OSHA litigation. Brochures outlining these services to members and sample Construction Safety Manual and Employee Safety Rules put the tools for developing a safe and productive worksite at the fingertips of ECA members. Members also have access to a Safety Lab that is fully stocked with training modules and equipment to simulate on-site field conditions to conduct their company's own safety training.

ECA teams up with other construction groups to offer a full menu of training and education programs on subjects like small business finance, human resources, green building and LEED, blueprint reading, estimating and the OSHA 10 and 30-hour Courses. An Annual Masonry Design Seminar is sometimes cosponsored with local professional organizations such as the American Institute of Architects (AIA) or American Society of Civil Engineers (ASCE). ECA has also teamed up with IMI and BAC Local - 2 NY/VT to present and sponsor educational seminars on masonry construction, provide free accredited professional education for masonry contractors and designers and offer technical assistance to the design and construction community (as reported in IMI Services Section of [2nd Quarter 2011 ICE Voice](#)).

ECA members receive the benefits of a specification review service that reviews bidding documents for their consistency with standards of equity and industry practice and submits comments to the design professional for the project, requesting change. They have access to models for an Employee Assistance Program (EAP), alcohol and drug testing requirements, policies and contract language, employee assistance programs (EAP) requirements and commercial drivers' license (CDL) requirements. Conference facilities with meeting rooms that can accommodate as many as 100 persons with projection screens, podiums and public address systems and a full schedule of social networking events round out the benefits of one of the most comprehensive construction associations in the country.

Back to [top](#).

EASTERN CONTRACTORS ASSOCIATION ARTICLES

MAIN ARTICLE

PLAN ROOM

CAPITOL DISTRICT MASONRY
INSTITUTE

A TRADITION OF
STEWARDSHIP

EASTERN CONTRACTORS ASSOCIATION QUICK FACTS

MEMBERSHIP

*285 Total Members
47 Masonry Contractor
Members*

OFFICERS

Sam Greco, President
Sam Greco Construction, Inc.

Peter Maloy, Vice President
James H. Maloy, Inc.

Roger H. Jones, Treasurer
*Campito Plumbing & Heating,
Inc.*

Jerry Curran, Secretary
J.J. Curran & Son, Inc.

Thomas Murray, Immediate
Past President
*Colonie Masonry Corp. of
Albany, Inc.*

Planroom

ECA's online and physical planroom provides an up-to-date source of construction project news and information that covers all of Upstate New York. In the physical planroom, bid documents, specifications and



blueprints may be used during business hours, as well as being signed out overnight and on weekends. A Planroom Coordinator is on hand at all times to assist members and to oversee planroom operations, as well as enforce the observance of a set of guidelines that give users equal access to plans that are in good condition and an environment where they can examine them without distraction. The planroom is one of the most comprehensive in the state and plans on file cover projects throughout upstate New York, but the staff will also make every effort to obtain plans not on file when requested by a member. The online planroom makes plans and specifications available for viewing, downloading and printing 24-hours a day, 7 days a week right from the members' own computers. Planroom services include instant notification of addenda, filters and search options to narrow projects by location, scope of work and size, access to bidders lists, online ordering of drawings for printing or pickup and creation of "Invitations to Bid" for subcontractors and suppliers.

Back to [top](#).

Back to [Affiliate Focus top](#).

Capitol District Masonry Institute

ECA is a multi-craft association, but that does not mean that specific needs of masonry contractors are not addressed by the association. ECA runs the Capitol District Masonry Institute, whose main purpose since 1970 has been to promote an increased and wider use of masonry and plastering products with the aim of preserving and advancing these products.

CDMI has hosted day-long masonry seminars featuring speakers and demonstrations on a variety of masonry topics and currently sponsors seminars for contractors, masonry employees, architects and engineers, educating them on new techniques, codes, standards and products within the masonry world. CDMI has opted to forego annual



seminars to partner with IMI to offer seminars throughout the year for 2010 and

Board of Directors

SPECIALTY CONTRACTORS / SUBCONTRACTORS:

JD Gilbert, *Western Building Restoration Co., Inc.*

Jeff Jordan, *Quality Painters & Decorators, Inc.*

Anthony Marchio, Sr.,
D. & M. Tile Corp.

Pat Mion,
Anthony Mion & Son, Inc.

Angelo Muscolino,
AM Contracting, LLC

DIRECTORS-AT-LARGE

OUTLYING AREAS:

Keith Stay,
Theodore Stay & Sons, Inc.

MECHANICAL, ELECTRICAL & SHEET METAL CONTRACTORS:

Brian Hart,
George J. Martin & Son, Inc.

Roberta Young, *RBM Guardian Fire Protection, Inc.*

GENERAL CONTRACTORS:

Alisa C. Henderson,
Duncan & Cahill, Inc.

Ken Jersen,
KJJ Industries, LLC

Carl Stewart,

2011 as a way to keep masonry on the minds of their members as well as local architects and engineers more than once a year, but future years may see the program growing to include annual seminars and continued sponsorship of events with IMI.

CDMI has also sponsored a "Mark of Excellence Award" designed to give recognition to those engaged in outstanding usage of masonry products in the NY Capital District area. Only union-built projects are eligible for consideration.

Back to [top](#).

Back to [Affiliate Focus top](#).

A Tradition of Stewardship

All local association executives who serve as trustees on benefit funds endeavor to be good, professional and educated trustees, and many trustees attend the International Foundation of Employee Benefit Plans' Annual Conference to fulfill their educational goals, but few have demonstrated that commitment to the extent that ECA executives have. ECA's Managing Directors have a tradition of involvement in the administration of the Foundation, a nonprofit organization that delivers education, information and research, and networking opportunities to thousands of benefits and compensation professionals who have come to rely on it for objective, accurate, and timely information.

ECA's past Managing Director and current Labor Relations Director, Tony Caropreso, was President of the Foundation in the year 2000 and has a list of over 100 committee assignments, board positions and conference moderator roles over 24 years on his resume. Caropreso's involvement continues, currently sitting on the Trustees Committee, but his successor has also taken up the baton of service to the Foundation. Managing Director, Todd Helfrich, has a growing list of committee appointments and moderator roles of his own, including his current service on the Multiemployer Value-Based Health Care Committee and the Foundation's Board of Directors.

"Being involved with the International Foundation has provided educational opportunities that I have found to be of huge benefit to me and the participants I represent. Never before has there been as many changes in the employee benefit field than there has in the last



Turner Construction Co.

*Darwyn Quay, Jr., Clifford H.
Quay & Sons, Inc.*

SERVICE:

Joel Howard, Couch White, LLP

*Tom Tyrrell,
Fuller & O'Brien, Inc.*

SUPPLIERS:

*Dan Casale,
Clemente Latham Concrete*

*Ralph Viola,
V. Zappala & Co., Inc.*

*Todd G. Helfrich,
Managing Director*

Address:

6 Airline Drive
Albany, NY 12205-1095
Phone: 518-869-0961
Fax: 518-869-2378
toddh@ecainc.org
www.ecainc.org



CDMI

five years. From PPA to the Healthcare Reform Act, to Pension Relief Funding, to new IRS and DOL regulations, Trustees need to keep on top of these changes and how they affect their plans" - Todd Helfrich

Back to [top](#).

Back to [Affiliate Focus top](#).



Plan Room

Contact Us:

**International Council of Employers
of Bricklayers and Allied Craftworkers**
P.O. Box 21462 - Washington, DC 20009
www.icebac.org

Matthew S. Aquiline, Executive Director
Ph: 202-210-6069
Fax: 202-457-9051
maquiline@icebac.org

Laina Aquiline, Director of Advocacy
Ph: 202-390-3247
Fax: 202-457-9051
laquiline@icebac.org

Forward email



This email was sent to maquiline@icebac.org by info@icebac.org |
[Update Profile/Email Address](#) | Instant removal with [SafeUnsubscribe™](#) | [Privacy Policy](#).

Int'l Council of Employers of BAC | P.O. Box 21462 | Washington | DC | 20009

